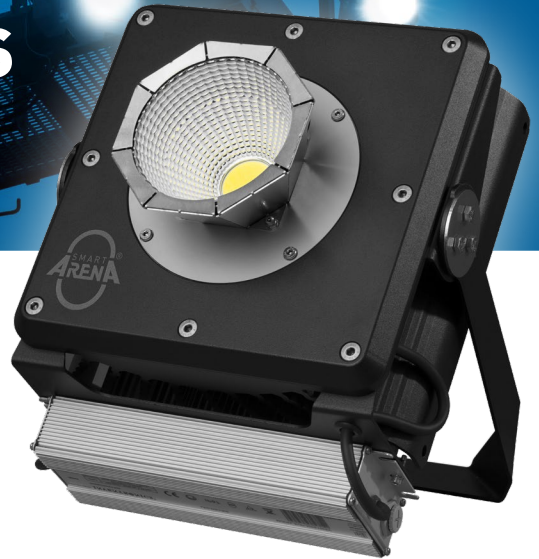




LARGE SCALE LIGHTING

TERA 2.0 SERIES



SPECIFICATIONS

	BASIC	ADVANCED	HIGH-END
LUMINOUS FLUX	35.000 Lm	38.000 Lm	40.000 Lm
ELECTRICAL POWER CONSUMPTION RATED VOLTAGE	300 W AC 230 V/50 Hz	350 W AC 230 V/50 Hz	400 W AC 230 V/50 Hz
LIGHT DISTRIBUTION interchangeable optical system	R 10° R 15° R 25° R 35° R 45° R 60° R 90° High performance reflectors or lenses		
CCT	5700 K – others on request		
POWER FACTOR	0,98		
IP RATING	IP67		
SIZE (H x L x W)	260 x 260 x 165 mm (without bracket and optic)		
WEIGHT (kg)	approx. 7 - 10 kg according to configuration		
Lumen Maintenance	23.000 hrs L90, min. 80.000 hrs L80 (T _a = 15°C)		
FLICKER	0 % also in dimmed operation!		
TV COMPLIANT	HD UHD/4k SSM (super slow motion)		
TEMP-SAVE (overheat-protection)	✓	✓	✓
ACTIVE THERMO-MANAGEMENT	✗	✓	✓
EPA	0,085 m ²	0,085 m ²	0,098 m ²
CRI	Ra > 85	Ra > 85	Ra 97
TLCI - Television Lighting Consistency Index	80	80	95
DIMMING	✗	SWITCH DIMMING programmable	DMX/RDM DIMMING