

SHARPY X SPOT

**COMPACT, WITH A BIG PUNCH.
THE PERFECT SPOTLIGHT COMPANION
FOR THE SHARPY X FRAME, WITH AN
UNMATCHED COST/PERFORMANCE
RATIO**

- **Light Source:**
550W arc lamp
- **Output:**
up to 18,800 lm
- **Zoom Range:**
2°-52° (up to 0.5° using beam diameter reducers)
- **CloudIO Ready:**
Fully compatible with CloudIO



The Sharpy-X-Spot is a simplified Sharpy-X-Frame model, with all the same lighting, optical and construction features that have made the Sharpy-X-Frame so successful. First of all, it fits a powerful **550 Watt arc lamp**, which makes this fixture extremely bright and produces deep, vivid, uniform colours, including an unparalleled deep red.

The effects section is outstanding. It includes a **rotating, interchangeable HD gobo wheel**, an **18-gobo fixed gobo wheel** (including 6 beam diameter reducers), an exceptional **animation wheel**, and **one four-sided and one eight-sided rotating prism, both on dedicated channels**. Without a doubt, the Sharpy-X-Spot offers the lighting designer one of the most appealing effects sections on the market!

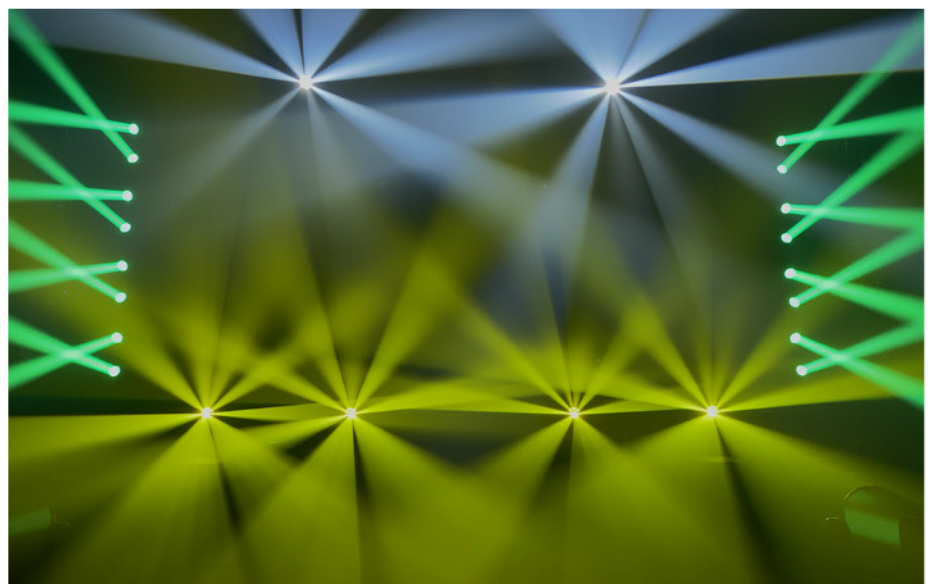
It is **lightweight and compact**, and features a **linear frost filter** and a colour system with **CMY, CTO filter and a separate colour wheel**. With a zoom range from **3° to 52° (spot mode)** and **2° to 29° (beam**

mode), the Sharpy-X-Spot can create incomparable visual effects. The unit fits a **160mm (6.3 inch) front lens**, and tried and tested Claypaky optical system for producing sharp images and collimated beams.

If needed, the **“beam shaper” module** - provided as an accessory - can be

added, thus turning the Sharpy-X-Spot into a fully-fledged Sharpy-X-Frame! The module is automatically recognized by the product firmware.

The Sharpy-X-Spot is ideal for those who want a light with excellent performance and a **cost/performance ratio** without equal on the market.



SHARPY X SPOT

MAIN FEATURES

- Light source: 550W arc lamp
- CRI: 80+, and up to 90 by mixing the CMY wheels
- Output: 18,800 lm (in integrating sphere)
- 160-millimetre diameter front lens
- 3°-52° (spot mode) and 2°-29° (beam mode) linear motorized zoom
- Linear CMY colour mixing
- Linear CTO
- 14-colour wheel on separate channel
- 1 rotating gobo wheel with 8 interchangeable glass gobos
- Static gobo wheel with 18 static gobos
- Six beam reducers (down to 0.5°)
- Animation wheel
- Rotating four-sided prism on dedicated channel
- Rotating eight-sided prism on dedicated channel
- Motorized iris
- Linear frost filter
- Dimmer and stop/strobe
- Control protocols: DMX, Art-Net, RDM and sACN
- Personalities: single mode with 32 control channels
- CloudIO ready: fully compatible with CloudIO
- Operating voltage: 100-240V, 50/60 Hz
- Max power consumption: 750VA
- Weight: 27 kg (59.52 lbs)
- Size (LxWxH): 350x306x668 mm (13.8x12x26.3 in)



Arolla

POWERFUL, COMPLETE, COMPACT IP66 LED PROFILE MOVING HEAD, WITH OUTSTANDING LIGHT OUTPUT: A TRUE WORKHORSE FOR ALL OCCASIONS!

- **Light Source:**
custom 900W white LED engine (7000 K)
- **Output:**
40,000 lm
- **Zoom Range:**
5.5°-50° (9:1) linear zoom
- **GoBright Technology:**
No light loss or color shift when gobos are inserted into the beam
- **Aqua IP66 Series:**
Moving head fixture compatible for outdoors (IP66)
- **CloudIO Ready:**
Fully compatible with CloudIO







In recent years, lighting professionals have made increasingly precise demands, and manufacturers have geared their production to certain market trends which have become impossible to ignore.

One of these, **IP66 weather-resistant lights**, has been taking an ever-greater market share. They are not only seen as the perfect fixture for outdoor events, but also as ideal lights for indoor productions, since they are **protected against the harmful effects of dust** and a variety of other external agents, and therefore require less maintenance. In the long run, this results in time and

cost savings, and a better return on investment.

The **Arolla Aqua** is Claypaky's top-of-the-range weather-resistant light. It is a true workhorse with IP66 rating and technical and construction features which were once unimaginable for this kind of light.

Claypaky's R&D department's challenge was principally to design a high-power, high-brightness fixture with top-level performance while at the same time limiting its weight and size. The Arolla Aqua's dimensions are indeed remarkable: **less than 750 mm** in height and only **38.5 kg** in weight, thus enabling **fast pan and tilt movements**.

The Arolla Aqua fits a **white 900 W (7000 K) LED light source**, capable of a 40,000-lumen output. This means it can compete with both high-power-range lights (given its output) and medium-power-range lights (given its small size and weight).

Its **uniform light beam** is another key feature. The high quality of the beam, its density, and the total absence of spurious lights can be appreciated with the naked eye, and its **zoom** can be adjusted over a **linear 5.5°-50° range (9:1)**.

The Arolla Aqua boasts an effects section consisting of **two gobo wheels**

(**one of which rotating**) with very **high-definition dichroic glass gobos**; an innovative **animation wheel** which brings out some of the most typical effects of this feature, a **four-sided prism**, a **16-blade motorized iris**, a **framing system** on four focal planes with rotation between +/- 60°, and a **separate macro control channel**.

Thanks to our exclusive **"Go-Bright" technology**, there is no light loss or colour shift when gobos are inserted into the beam. The gobos can be swapped and morphed with each other and the animation wheel to create new, exciting textures.

The colour section consists of **CMY colour mixing with 16-bit control, linear CTO** and a **six-colour wheel** (including an **88+ CRI enhancement filter**). This outstanding moving head comes complete with a **soft edge frost filter, flood frost effect, ultra-precise 24-bit digital dimmer**, digital stop strobe and four fan operating modes, right up to the highest level of quietness.

The Arolla Aqua sets a new benchmark for professionals who are looking for a high-power IP66 light which is compact, reliable and complete in every aspect, with top performance and an **unparalleled cost-performance ratio**.



MAIN FEATURES

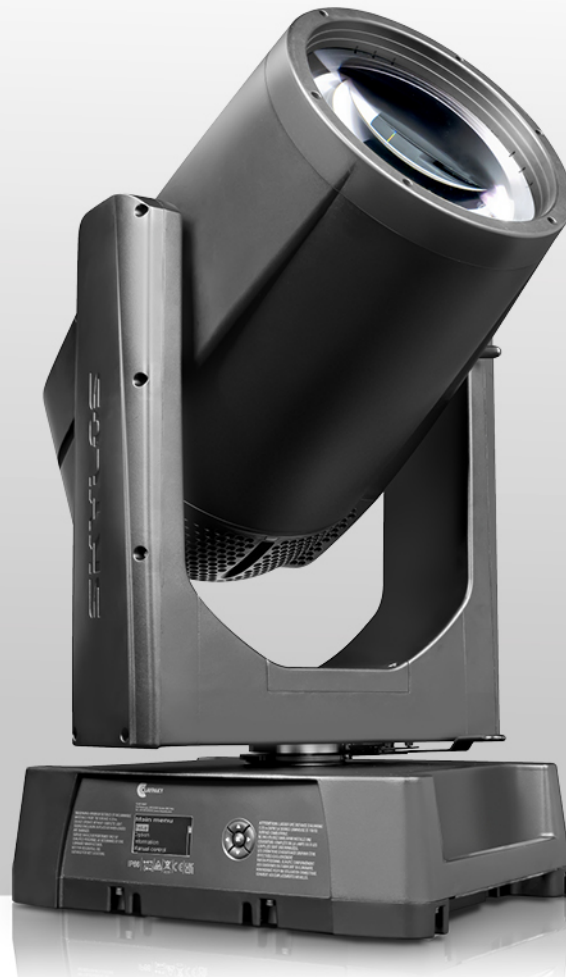
- Light source: custom 900W white LED engine (7000 K)
- CRI: 70+ with selectable filter for CRI 88+
- Output: 40,000 lm (in integrating sphere)
- 140-millimetre diameter front lens, consisting of high quality, tempered glass lenses
- 5.5°-50° (9:1) linear zoom
- 16-bit CMY color mixing
- Linear CTO
- Six-color wheel (including high CRI filter)
- 7 HD interchangeable rotating gobos
- 8 HD interchangeable fixed gobos
- Go-Bright Technology: no light loss or colour shift when gobos are inserted into the beam
- Animation wheel
- Four-sided rotating prism
- 16-blade motorized iris
- Framing system: four focal planes, +/- 60° rotation and macro channel control
- Soft edge frost and flood frost filters
- 24-bit digital dimmer with 4 user-selectable dimming curves
- Digital stop-strobe effect
- Control protocols: DMX, Art-Net, RDM, sACN
- Personalities: single mode with 38 control channels
- CloudIO ready: fully compatible with CloudIO
- Operating voltage: 100-240V, 50/60 Hz
- Max power consumption: 1200VA
- Four user-selectable fan speed modes
- Weight: 38.5 kg (84.9 lbs)
- Size (LxWxH): 355x430x743 mm (14.0x17.0x29.3 in)
- IP66 protection rating



SKYLOS

ULTRA-VERSATILE AND WEATHER-RESISTANT, WITH INCREDIBLE LIGHT OUTPUT AND OUTSTANDING CONSTRUCTION FEATURES: MUCH MORE THAN JUST A CLASSIC SEARCHLIGHT!

- **Light Source:**
Custom 300W white laser engine
- **Output:**
>250 Mcd
- **Zoom Range:**
0.5° to 5° (10:1) linear edge
- **Aqua IP66 Series:**
Moving head fixture compatible for outdoors (IP66)
- **CloudIO Ready:**
Fully compatible with CloudIO



AQUA
IP66 RATING

CloudIO
READY!

Large searchlights have written one of the most glorious pages in the history of professional show lighting. Yet today they are considered unviable since many firms are not open to investing in a technology that often has weight, size, operating cost and maintenance drawbacks.

Claypaky's **SKYLOS** aims to quash these uncertainties and comes with a long list of features and performance specs that make it much more than just a sim-

ple searchlight. The Skylos is an extremely versatile fixture in every way, which will certainly also be appreciated in the touring sector, where LDs are constantly on the look-out for dense, solid beams of light and ever-greater light output.

The Skylos fits a **custom 300W white light laser source**, which provides an extremely parallel, uniform beam, while attenuating the well-known temperature and safety issues found with units that use Xenon lamps.



HIGHLY ADVANCED OPTICS

Considering the light output, its power consumption is not even close to that of traditional searchlights. With a power consumption of only 600W, the Skylos has the same light output as a 4000-watt Xenon lamp!

The beam pours out from a **large 300 mm front lens**, specifically designed in Claypaky's R&D department. In combination with the light source, it produces a dense, full-bodied column of light, which is highly visible even from afar. The beam is perfectly uniform and parallel, with no visible hotspots. The beam angle can be adjusted **from 0.5° to 5°** resulting in exceptional light intensity, which cannot be produced by a LED or traditional light source.





OUTSTANDING “BEAM” EFFECTS

Its range of effects includes a slot for **customizable gobos** and a **battery of prisms**, which distinguishes it from other fixtures. On one wheel, we find a **rotating six-sided prism** and a **rotating five-sided linear prism**. And on a second level, we find a **fixed 4-sided prism**, which can be superimposed on the other two to achieve a breath-taking **Moonflower effect** and many other fantastic never-seen-before mid-air effects. Laser technology adds outstanding optical contrast, making all light projections razor-sharp.

Other Skylos features include a **15-color wheel**, with color filters designed to preserve and optimize the high brightness

of the light beam, a **5° frost filter** for a soft edge effect which can be used in various applications, a **24-bit digital dimmer** and a digital stop-strobe effect.

If you consider its light output and the size of the front lens, the body of this remarkable light is **lightweight and compact**. This allows the unit both to be moved with relative ease in any environment, and to be rigged on trusses for use on tours.

Its compactness also makes for **fast pan and tilt movements**, perfect for live shows. It is truly worlds apart from the slow, elephantine movements of many of its predecessors!

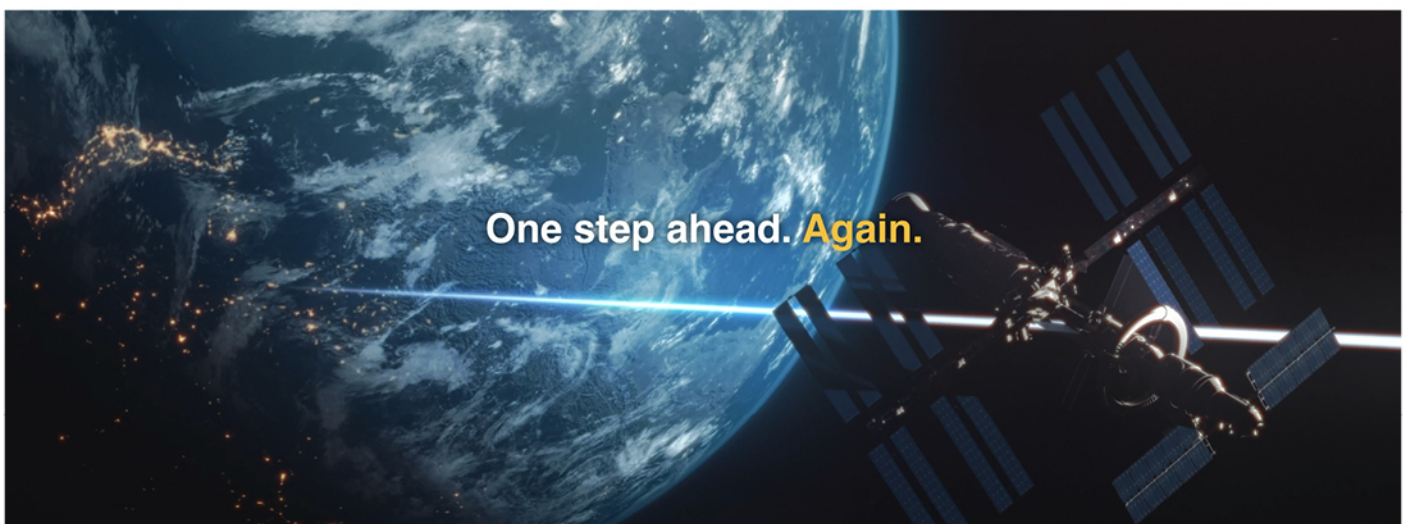
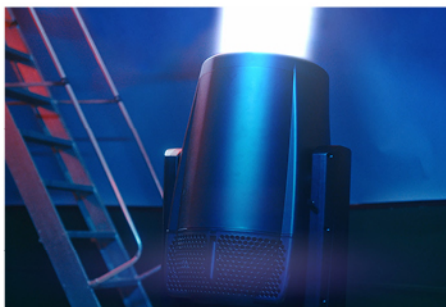


IN ANY WEATHER CONDITION

Its body is **IP66 protection rated** and **marine grade**. So is capable of working in any weather conditions and in environments with high marine salinity and a high risk of corrosion. A sophisticated internal heating system designed specifically for this product means it can **even work at very low temperatures (as low as -40°C / -40°F)**.

The Skylos goes far beyond the legacy of classic searchlights, and opens up unexplored market opportunities. It is the ideal light for every environment and field of use, from touring and large events to theme parks and fixed installations, thanks to its innovative, perfectly safe light source, top-notch performance with low power consumption, very low maintenance requirements, and specially designed body which makes it suitable for use in even the most extreme conditions.

Pictures from Skylos' Video Teaser



April 2023 - Subject to change without notification

SKYLOS

MAIN FEATURES

- Light source: custom 300W white laser engine
- Output: >250 Mcd
- 300-mm diameter front lens, consisting of high quality, tempered glass lenses
- Perfect beam collimation and uniformity
- 0.5° to 5° (10:1) linear edge
- 15-color wheel
- One slot for custom fixed gobo
- Rotating 6-sided + 5-sided linear prisms on a wheel
- Fixed 4-sided prism on a second layer, which overlaps with the other two in order to create a Moonflower effect
- 5° frost filter
- 24-bit digital dimmer
- Digital stop-strobe effect
- Control protocol: DMX, Art-Net, RDM, sACN
- CloudIO ready: fully compatible with CloudIO
- Operating voltage: 100-240V, 50/60 Hz
- Max power consumption: 600 W
- Weight: 59 kg (130 lbs)
- Size: 480x399x923 mm (20.1x12.3x31.5 in)
- IP66 and marine grade protection rating
- Internal heating system (-40°C to +45°C working temperature)



BUDDYLIGHT

**YOUR TRUSTWORTHY
AUTOMATED FOLLOWSPOT!**



The Buddylight is Claypaky's brand new remote followspot system. It follows performers and speakers automatically, in a quick and easy way.

The Buddylight can be used either in an Art-Net or DMX network - by setting up control priority management with the console - or in standalone mode, where it really comes into its element!

Setting it up has been designed to be quick and user-friendly for all types

of user thanks to a simplified, flexible installation.

The maximum tracking area can extend up to 15x15 m (16.4x16.4 yards). Anchors should be placed to mark out the space within which the performer can move.

The tags, which the performer has to wear so that they can be followed by the followspot, are designed so they can quickly access the main functions

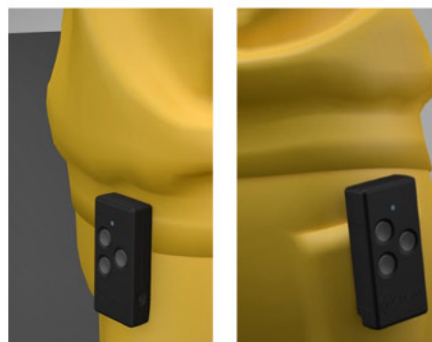
of the spotlight and its automated control.

The Buddylight marks a further step towards ever greater entertainment light automation. It is perfect for theatres, auditoriums and conference rooms. The Buddylight is a new, practical, user-friendly Claypaky system suitable for all budgets. A true buddy who will accompany your performance!

BUDDYLIGHT BOX FIXTURE CONNECTION



TAG ARRANGEMENT ON THE PERFORMER



ANCHOR PLACEMENT (HOLDER + TAGS) TO MARK OUT THE STAGE

