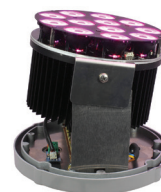




Studio Due®

emotion and creativity in light



Inground LED fixture with 12 powerful RGBW LEDs. IP67 rating protection. It is possible to adjust the TILT position of the fixture. The motorized tilt adjustment function (by dedicated DRS Setup) allows you to position the light beam in the most appropriate way, so it is not necessary to open the device that maintains the degree of protection IP67. Manual Pan 180° and motorized Tilt adjustment -2° +10°. TERRA PLUS RDM RGBW can be used to decorate columns, pillars, along walkways, on patios, in steps, to highlight and to landscape details and key elements.

• Standard fixture colour finishing is grey

ITEM	FIXTURE	[KEY features]
LEDs	RGBW	12 RGBW
Total light power		40W
Lumen		R 600, G 1100, B 170, W 1200
Optics		15° beam (38 mm lenses) - On request: medium and wide beam
Pan - Tilt		Manual Pan 180° - Motorized Tilt adjustment -2°... +10° by DRS Setup (needed)
Power consumption		45W - 0,2A@230V - PF0,9
Voltage range		Universal 100 - 240Vac
Physical		DxH: ø 256x200mm
Weight		5,5 Kg
Control		Standard interface: RS-485, Protocol: RDM / DMX 512, Artnet by external converter
Connections		Main Power: 3x1 cable DMX INPUT and Tilt control: 4 Pin Male IP67 connector DMX OUTPUT: 4 Pin Female IP67 connector
Setup		RDM Control/configuration or individually by DRS (remote control device) Dedicated DMX channel for white balance DMX or Auto mode with Master-Slave function Intelligent temperature control Halogen simulation CYM simulation Flicker-free function Smooth dimming function
DMX channels		10CH mode, 9CH mode, 5CH mode, 4CH mode, 3CH mode



dedicated DRS Setup for Tilt adjustment

