



Type(s)
Project
Date
Notes

GENERAL INFORMATION

The ArcSystem Recessed Ceiling Bracket allows an ArcSystem Pro One-Cell, Pro One-Cell High Output, Pro One-Cell Small, or Navis 100 recessed luminaire to be securely installed into an open format or suspended/drop ceiling grid.

The recessed ceiling bracket is intended for use in ceiling voids from 0.3–1.22 m (1–4 ft). The bracket is easily installed on user-provided horizontal supports using standard attachment methods or ETC-supplied brackets.

Note: ArcSystem luminaire sold separately.

APPLICATIONS

- Suspended/drop ceilings
- New construction
- Open ceiling concepts
- Suitable for use between joists or T-bar grids with a spacing of 30.5–122 cm (12–48 in)

FEATURES

- Luminaire attachment bracket locks securely on to 3/4 in or 25 mm galvanized EMT conduit (conduit provided by others)
- Adjustable height for a large variety of ceiling void spacings
- Easy-to-use Joist and T-Bar bracket available

MECHANICAL

- Frame manufactured from 1.6 mm (16 GA) galvanized steel
- Maximum load: 3.0 kg (6.5 lb)
- Only adds 1.6 mm (0.06 in) to total ceiling thickness

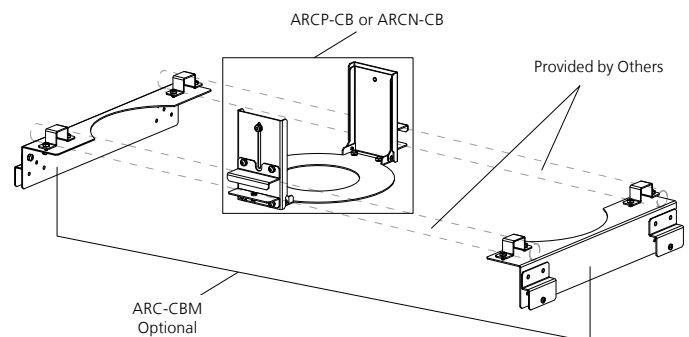
COMPATIBILITY

- ArcSystem Navis 100
- ArcSystem Pro One-Cell
- ArcSystem Pro One-Cell High Output
- ArcSystem Pro One-Cell Small

ORDERING INFORMATION

MODEL	DESCRIPTION
ARCN-CB-N100	Recessed Ceiling Bracket, Navis 100
ARCP-CB-1C/HO	Recessed Ceiling Bracket, ArcSystem Pro One Cell and One Cell HO
ARCP-CB-1CS	Recessed Ceiling Bracket, ArcSystem Pro One Cell Small
ARCP-CB-DBRKT	Recessed Ceiling Bracket add-on for ArcSystem Pro D1/D1HO Driver
ARC-CBM	Universal Mounting Kit for ArcSystem Recessed Ceiling Bracket, includes two brackets

Note: ARC-CBM is an optional attachment method for horizontal EMT conduit supports and is not necessary if a support method provided by others is preferred.



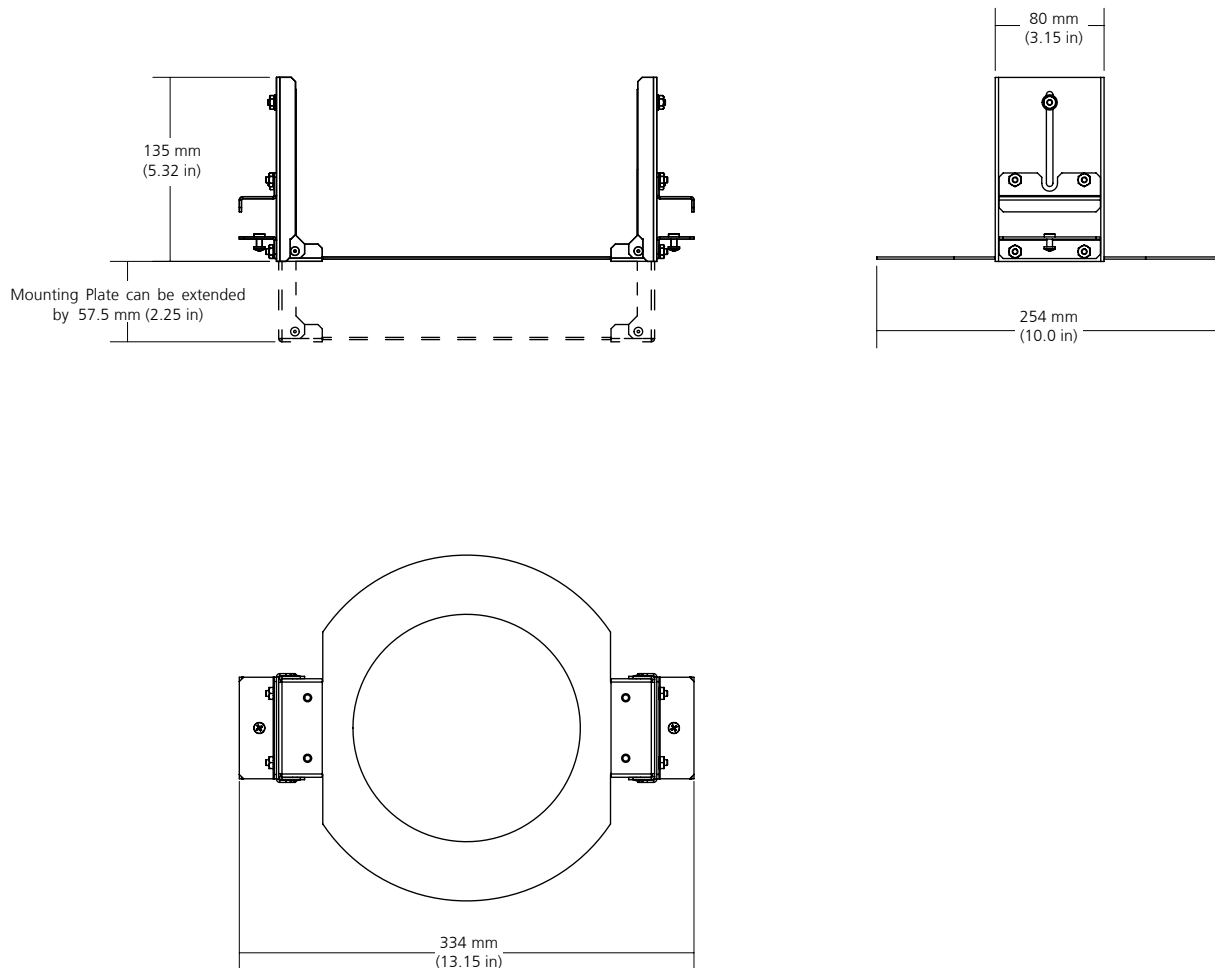
PHYSICAL

Product Dimensions

MODEL	LENGTH		WIDTH		HEIGHT		WEIGHT†	
	in	mm	in	mm	in	mm	lb	kg
ARCN-CB-N100	13.15	334	10.0	254	7.57	183	2.6	1.18
ARCP-CB-1C/HO	13.15	334	10.0	254	7.57	183	2.6	1.18
ARCP-CB-1CS	13.15	334	10.0	254	7.57	183	2.6	1.18
ARC-CBM ‡	14.50	368	2.43	62	2.50	63.5	2.2	1.00

†Excludes luminaire and galvanized steel pipes (provided by others)

‡Includes two brackets



Corporate Headquarters • Middleton, WI USA

Global Offices • London, UK • Rome, IT • Holzkirchen, DE • Paris, FR • Hong Kong
Dubai, UAE • Singapore • New York, NY • Orlando, FL • Los Angeles, CA • Austin, TX

Copyright©2023 ETC. All Rights Reserved. All product information and specifications subject to change. Rev A 2023-04

*Trademark and patent info: etconnect.com/ETC

etconnect.com