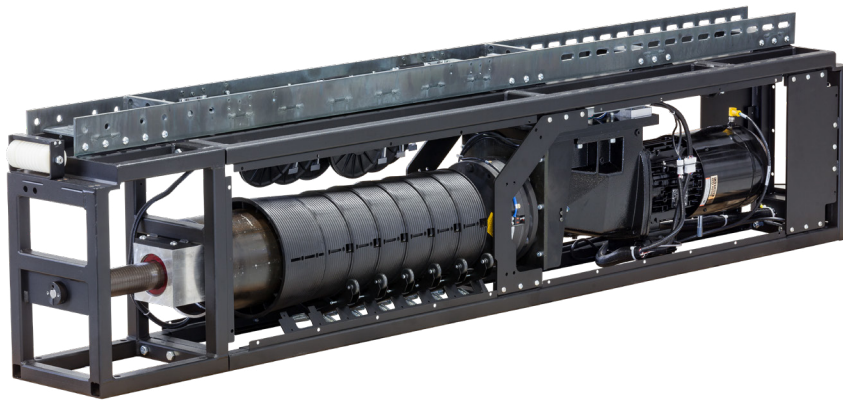


Prodigy Low Profile Hoist Series



Type(s)
Project
Date
Notes

GENERAL INFORMATION

APPLICATIONS

Prodigy P75 hoists provide a simple, low-profile way to manipulate stage electrics, scenery, and curtains for setup, storage, and performance in venues requiring as much as 23 m (75 ft) of vertical travel. The innovative technologies in Prodigy hoists reduce the space and structure requirements for stage rigging systems.

Fixed speed P75 hoists manage loads up to 1500 kg (3300 lb), providing safe and reliable access to even the heaviest stage electrics, drops, and stored scenery. The P75-SC self-climbing hoist is designed to fit within truss systems to support arena lighting and other loads.

Variable speed P75 hoists can raise and lower main drapes and scenery elements as quickly as 55m/min (180 fpm). Combined with ETC’s powerful and intuitive Foundation control system, Prodigy hoists give directors and designers artistic full access to the potential of your space.

FEATURES

- The revolutionary Prodigy Hybrid Drum manages up to eight lift lines with 23 m (75 ft) of travel in a slim footprint of 305 mm (12 in) or 355 mm (14 in)
- Hoists can be installed upright, underhung or vertically and support use with traditional upright or underhung head blocks and loft blocks
- Available soft start/stop models reduce the structural stress of moving large loads
- Wire rope can exit the powerhead from either end, or both
- Compression Tube snaps in place to interface with facility structure and neutralize additional lateral forces on the building
- Motor control electronics are included in the hoist Powerhead, no separate motor control cabinet required
- Safety Features Supplied as Standard:
 - Redundant braking
 - Load cells
 - Load profiling
 - Automated self-test
 - Slack line detection
 - Limit switches
 - Encoders

BENEFITS OF PRODIGY HOISTS

- Large capacity in a compact package – less load on the building and easy to install
- No additional lateral forces imposed on the building – lateral forces neutralized by available Compression Tube
- Innovative cable management systems
- Anywhere-positioning of loft blocks along Compression Tube so lift line placement is not dependent on building structure layout
- May be attached to almost any structure that can support the weight of the hoist plus the lifted load
- Low noise operation
- Powerful, safe, and easy-to-use controllers
- 24/7/365 support for every system in your space

REGULATORY AND COMPLIANCE

- cULus Listed
- PLASA/ANSI E1.6-1

HOIST DATA

Hoist Working Load Limit (WLL)	900–1500 kg (2000–3300 lb) - fixed speed 545 kg (1200 lb) - variable speed
Wire Rope Working Load Limit (WLL)	315 kg (700 lb) per line
Travel distance	23 m (75 ft)
Lift lines	up to 8*x6 mm (1/4 in)
Average Speed	6 m/min (20 fpm) P75-2000G/P75-2000GS 4.5 m/min (15 fpm) P75-3300GS/P75-SC 0–55 m/min (0–180 fpm) P75-V1200S
Powerhead weight	135–300 kg (395–660 lb)
Dynamic load	1.2 G
Motor operating temperature range	5°C–40°C (41°F–104°F)

*Hoists supporting Prodigy Cable Management systems provide a maximum of 7 lifting lines.



STANDARD SAFETY FEATURES

- Dual braking system consisting of a motor brake and redundant load side mechanical brake
- Rotary limit switches: upper limit, upper overtravel, lower limit, lower overtravel
- Slack line detection: a lift line slack condition will automatically stop the hoist from downward travel
- Load cell: provides Load Profiling and continuous monitoring of loads to prevent gross overload
- Load profiling: a user-recordable dynamic function to detect load deviations during travel
- Hardwired E-stop: each hoist has its own dedicated E-stop contactor
- Overcurrent protection: integrated overcurrent circuit to protect against electrical overloads

COMPRESSION TUBE MOUNTING			
Min Qty of Beam Clamps Required	Beam Clamp Spacing	Tube Weight	Standard Mounting Brackets Available for:
1 @ Powerhead + 1 per section of Compression Tube	Max 4.3 m (14 ft) on center	5.2 kg/m (3.5 lb/ft)	W-, S-, or I-Beam / Bar Joist / Unistrut*

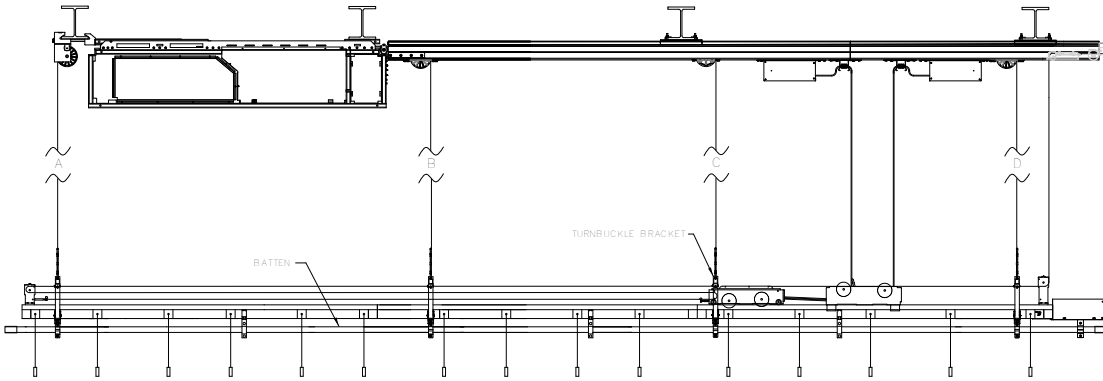
*Structure must be capable of supporting the hoist system plus the working load.

LOADING INFORMATION (LIFTING LINE PLACEMENT)						
Loading	Min Load Per Line	Max Load Per Line	Drop Pulley Locations With Compression Tube			Max # of Lifting Lines Available
			First Drop Pulley	Drops along Compression Tube		
Distributed load over the length of the batten	14 kg (30 lb)	315 kg (700 lb)	No minimum distance, but lift lines must not exceed more than 2° off-axis	1200 mm (4 ft) min spacing between loft blocks	3650 mm (12 ft) max spacing between loft blocks with 48.3 mm x 3.7 mm (1.5 in schedule 40) steel pipe batten 3050 mm (10 ft) max with ETC WebPipe batten	8* *Max of 7 lifting lines if hoist is supporting Prodigy Cable Management

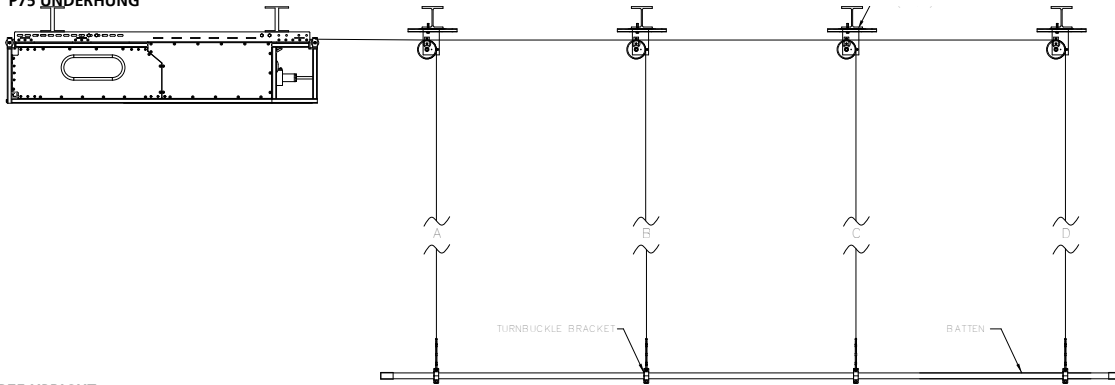
HOIST INFORMATION								
Powerhead Model	Powerhead Weight	Dimensions (H x L x W)	Lifting Capacity	Avg Speed	Power Input	Motor Size	Current Draw	Inrush Draw
P75-2000G	400 kg (875 lb)	590x2550x305 mm (23.25x100.5x12 in)	900 kg (2000 lb)	6 m/min (20 fpm)	208 V three wire+gnd	1.5 HP	5.4 A	26.4 A
P75-2000G/480	400 kg (875 lb)	590x2550x305 mm (23.25x100.5x12 in)	900 kg (2000 lb)	6 m/min (20 fpm)	480 V three wire+gnd	1.5 HP	2.42 A	11.8 A
P75-2000GS	400 kg (875 lb)	590x2550x305 mm (23.25x100.5x12 in)	900 kg (2000 lb)	6 m/min (20 fpm)	208 V three wire+gnd	1.5 HP	5.4 A	N/A
P75-2000GS/480	400 kg (875 lb)	590x2550x305 mm (23.25x100.5x12 in)	900 kg (2000 lb)	6 m/min (20 fpm)	480 V three wire+gnd	1.5 HP	2.42 A	N/A
P75-3300GS	485 kg (1070 lb)	635x2550x355 mm (25x100.5x14 in)	1500 kg (3300 lb)	4.5 m/min (15 fpm)	208 V three wire+gnd	1.5 HP	10.5 A	N/A
P75-3300GS/480	485 kg (1070 lb)	635x2550x355 mm (25x100.5x14 in)	1500 kg (3300 lb)	4.5 m/min (15 fpm)	480 V three wire+gnd	1.5 HP	5.25 A	N/A
P75-SC	500 kg (1105 lb)	770x3200x520 mm (30x125.5x20.5 in)	1500 kg (3300 lb)	4.5 m/min (15 fpm)	208 V three wire+gnd	1.5 HP	10.5 A	N/A
P75-SC/480	500 kg (1105 lb)	770x3200x520 mm (30x125.5x20.5 in)	1500 kg (3300 lb)	4.5 m/min (15 fpm)	480 V three wire+gnd	1.5 HP	5.25 A	N/A
P75-V1200S	400 kg (875 lb)	590x2550x305 mm (23.25x100.5x12 in)	545 kg (1200 lb)	0-55 m/min (0-180 fpm)	480 V three wire+gnd	1.5 HP	10.4 A	N/A

TYPICAL CONFIGURATIONS

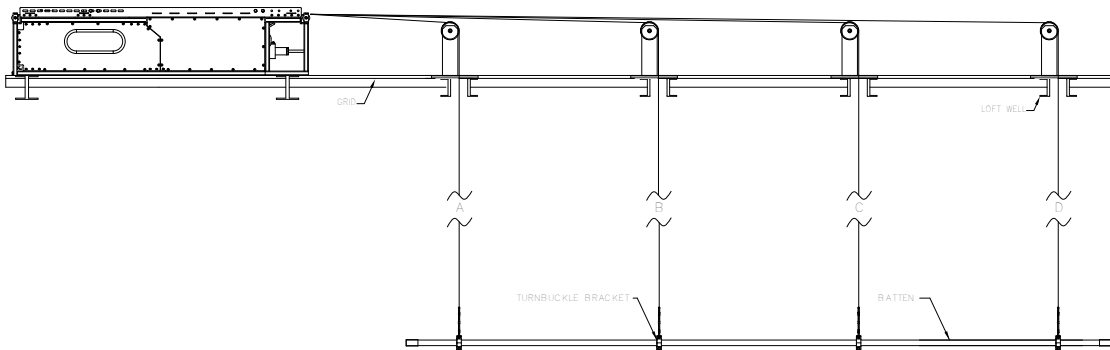
P75 WITH COMPRESSION TUBE



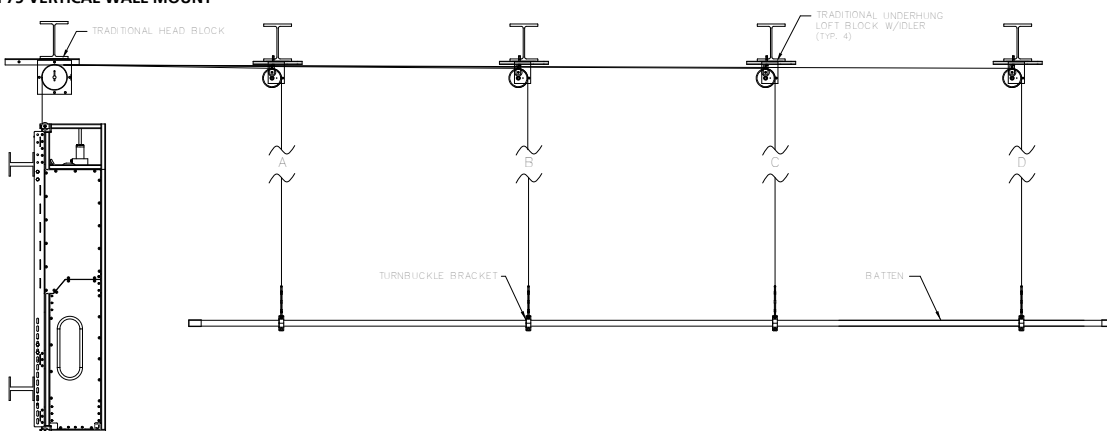
P75 UNDERHUNG



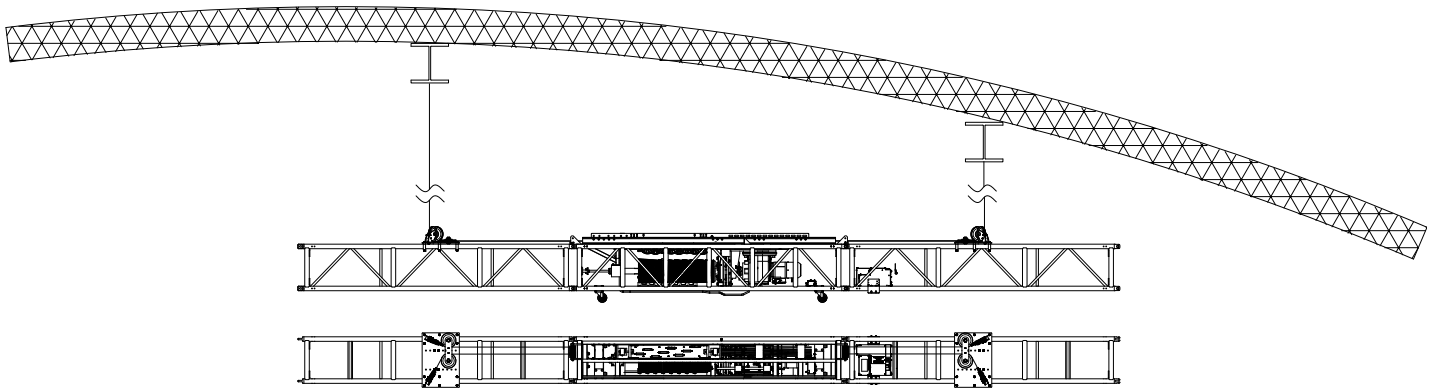
P75 UPRIGHT



P75 VERTICAL WALL MOUNT

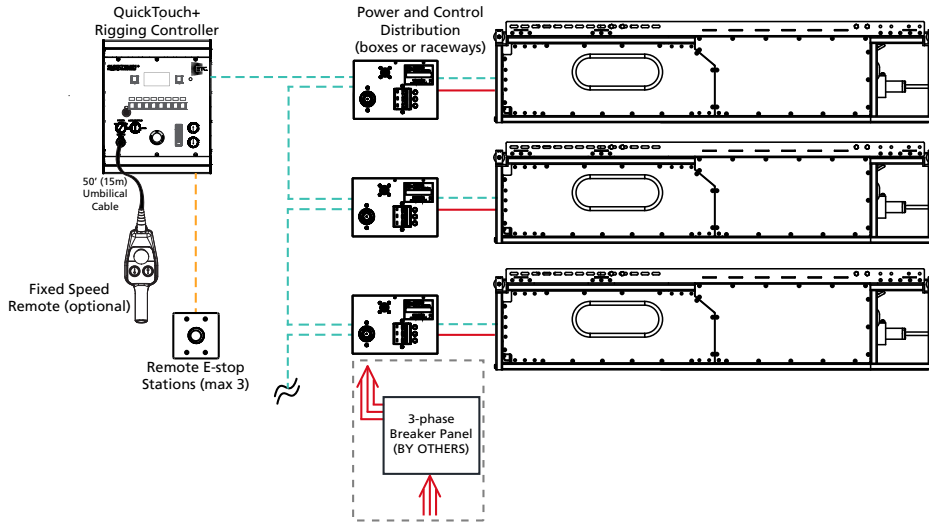


P75 SELF CLIMBER



SAMPLE SYSTEM RISERS

QUICKTOUCH+ CONTROL SYSTEM

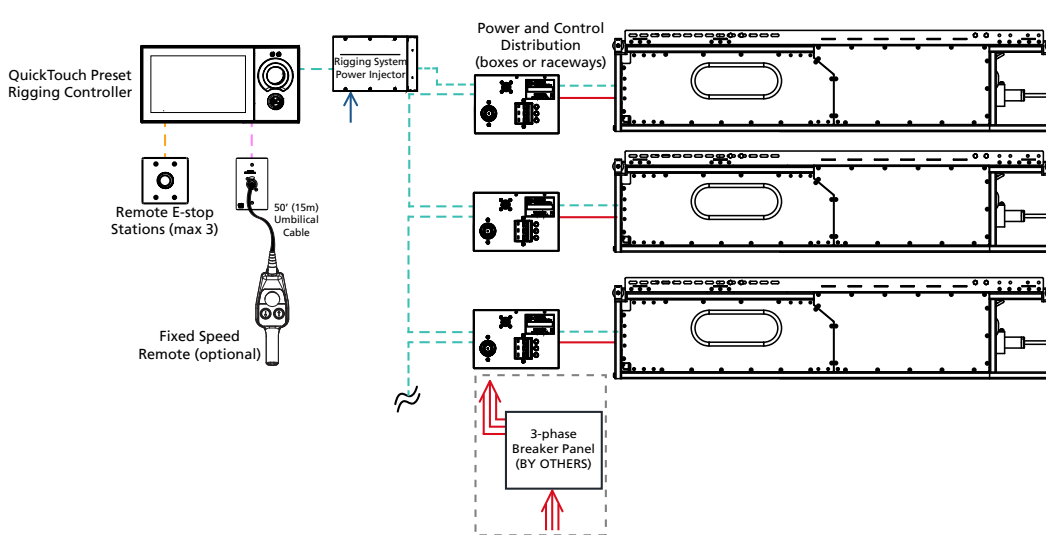


WIRING LEGEND

- 120 V 1P, 20 A max
- ⇒ 120/208 V 3P or 277/480 V 3P
- - - MCX
- - - Safety Link
- - - Ethernet
- - - Remote
- - - E-stop

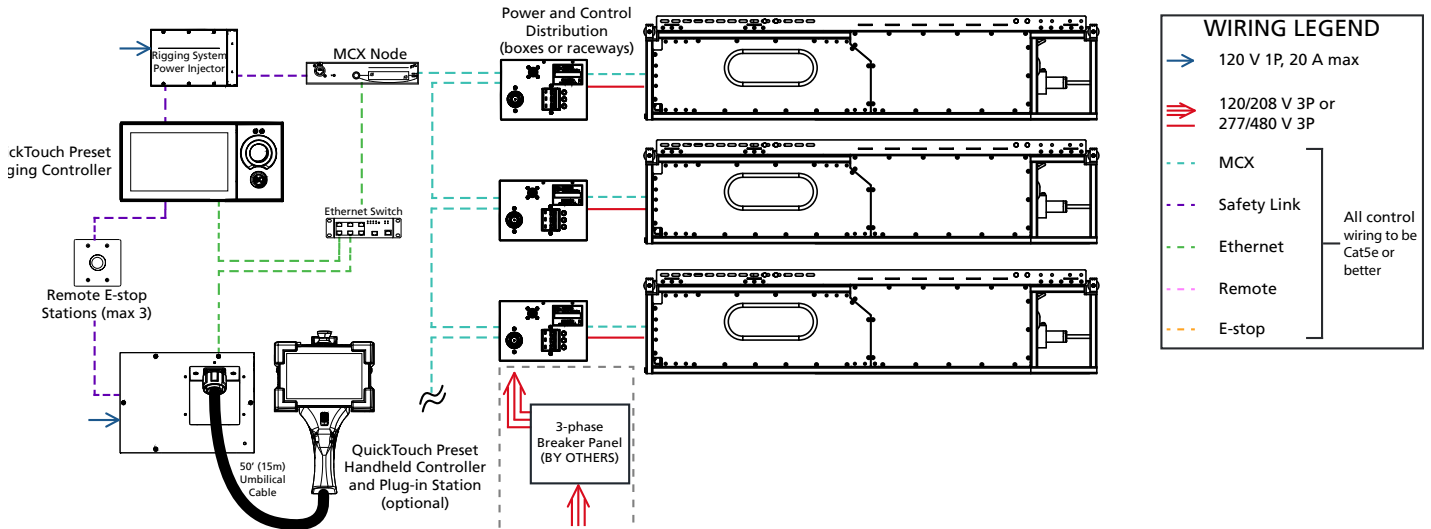
All control wiring to be Cat5e or better

QUICKTOUCH PRESET CONTROL SYSTEM

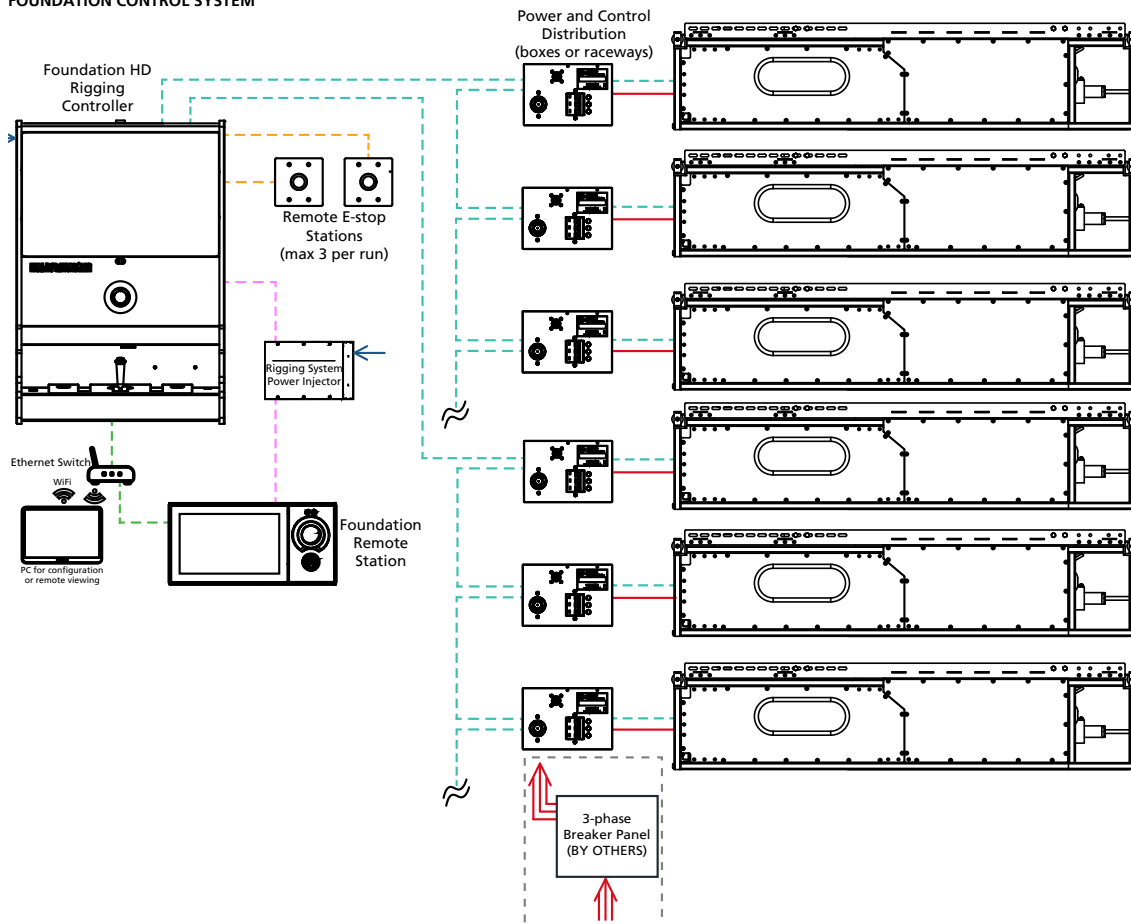


SAMPLE SYSTEM RISERS

QUICKTOUCH PRESET W/ QUICKTOUCH PRESET HANDHELD CONTROL SYSTEM



FOUNDATION CONTROL SYSTEM



Corporate Headquarters • Middleton, WI USA
 Global Offices • London, UK • Rome, IT • Holzkirchen, DE • Paris, FR • Hong Kong
 Dubai, UAE • Singapore • New York, NY • Orlando, FL • Los Angeles, CA • Austin, TX
 Copyright©2022 ETC. All Rights Reserved. All product information and specifications subject to change. Rev B 2022-05
 *Trademark and patent info: etconnect.com/IP