



VECTOR

Control Solutions for Creative Professionals







**TECHNOLOGY,
DESIGN AND VERSATILITY**

come together to form the most effective lighting control solution, and the most rewarding operating experience.

The Vector line of lighting control consoles offers the highest level of functionality and sophistication, based on the most advanced computer and networking technologies.



TECHNOLOGY

TECHNOLOGY



Vector is based on unique hardware of the latest technology and networking platform.

Vector runs on XP embedded Intel® Core™2 Duo processor utilizing custom graphical card supporting up to 6 screens.





Elegantly styled, vector is designed for speed, comfort and maximum functionality.

- Independent folding screens
- Adjustable LED-strip work lights
- Integrated illuminated text keyboard
- Integrated Speakers and amplifier
- Up to three external SVGA monitors
- DVD/CD-RW drive
- 20 motorized faders; 5 general purpose parameter wheels; one dedicated intensity wheel and one illuminated trackball
- Slim structure –only 32cm (12.6”) in height



MODELS

MODELS



Vector range of compatible models, offers convenient and cost effective control solutions for any venue type and budget.



Vector Blue



Vector Orange



Vector Green



Vector Red



Vector PC

VERSATILITY

VERSATILITY



Vector provides the most effective solution for any lighting environment:

- Theater
- Television
- Opera and Ballet
- Concert Touring
- Rentals
- Corporate events
- Architectural/Theme parks
- Cruise ships





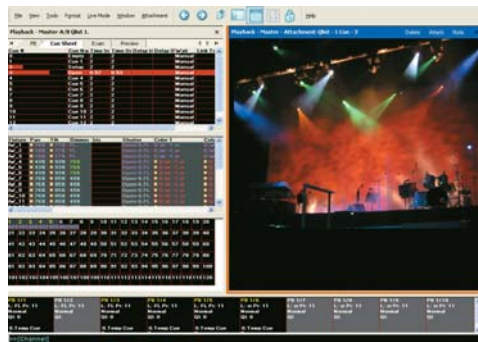
Vector provides the lighting professional with all the tools for controlling large quantities of conventional, automated fixtures, LEDs in a matrix setup and Media servers.



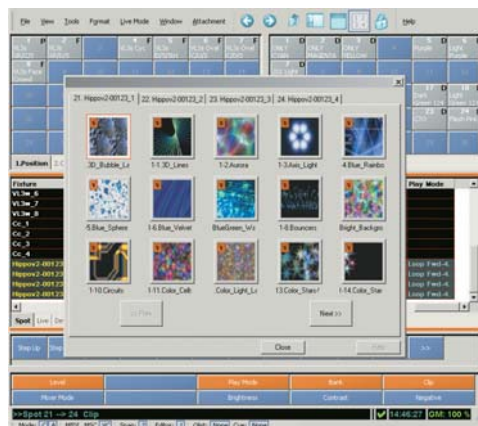
Vector PC



Fixture profile editor



Preview cue as image



Media server images



Expand vector control solution with:

- **Playback Wing** - Network based playback unit can be used as a panel extension, or as a remote playback control.

- **Editor Wing & Channel wing**- Network based editing unit, can be used as a remote control, or for a second operator next to the console.

- **iControl** - PDA based, wireless remote control.

- **Vector Node** - the 'all-in one' unit that offers backup, remote screens and replay capabilities.

- **ePort** - Ethernet to DMX conversion unit, enables expansion of Vector's control universes.

- **eSync** - SMS(SMPTE, MIDI, Sound) to Ethernet unit - used for receiving remote synchronization signals.



Playback Wing



Editor & Channel Wing



iControl



Vector Node



ePort



eSync

SPECIFICATIONS

SPECIFICAT

	Red	Blue	Green	Orange	Vector PC
DMX Universes	16	16	16	4	4-16(via ePort)
DMX Ports	8	8	4	4	4-16(via ePort)
DMX Inputs	2	2	1	1	1-2(via ePort)
Playback Faders	20	10	10	10	10(*)
Motorized Faders	yes	yes	No	No	yes(*)
Playbacks Keys	20	10	10	10	10(*)
Virtual Playbacks	200	200	200	200	200
Parameter Wheels	5	5	5	5	5(*)
Vertical Dimmer Wheel	1	1	-	-	1(*)
Illum. Trackball	1	1	1	1	1(*)
12.1" TFT Touchscreens	3	2	1	1	(**)
SVGA Outputs	3	3	1	1	(**)
Ethernet Ports	2	2	1	1	(**)
MIDI/MSC	yes	yes	yes	yes	yes(via eSync)
SMPTE Timecode	yes	yes	yes	yes	yes(via eSync)
Audio XLR	1	1	1	1	n/a
USB 2.0 Ports (front,back)	(1,2)	(1,2)	(2,2)	(1,2)	(**)
DVD/CD-RW drive	1	1	1	1	(**)
Hard Disk	160GB	160GB	160GB	160GB	(**)
Groups	9999	9999	9999	9999	9999
Libraries	9999	9999	9999	9999	9999
Macros	9999	9999	9999	9999	9999
Snaps	9999	9999	9999	9999	9999
Cue Lists	9999	9999	9999	9999	9999
Cue (in Cue list)	9999.9	9999.9	9999.9	9999.9	9999.9
Desk light connector	2	2	1	1	(**)
Serial comm.	2	2	1	2	(**)
Illum. sliding text keyboard	1	1	n/a	n/a	(**)
Width	125cm(49")	98cm(39")	66cm(27.5")	70cm(27.5")	
Depth	60cm(23.6")	60cm(23.6")	55cm(21.6")	54cm(21.6")	
Height	32cm(12.6")	32cm(12.6")	35cm(14")	19.3cm(4.6")	
Weight	35kg(77lb)	23.2kg(51lb)	16kg(35lb)	14kg(33.9lb)	

(*)With software panel, or external Playback/Editor wing

(**) Depending on hosting PC hardware



Compulite System (2000) Ltd.
9 Hanagar Street, Neve Ne'eman B
Industrial Zone
Hod Hasharon, 45421, Israel
Tel: 972 9 744 6555
Fax: 972 9 746 6515
info@compulite.com
www.compulite.com